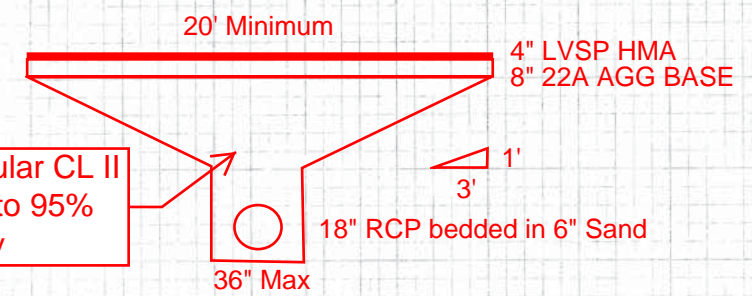
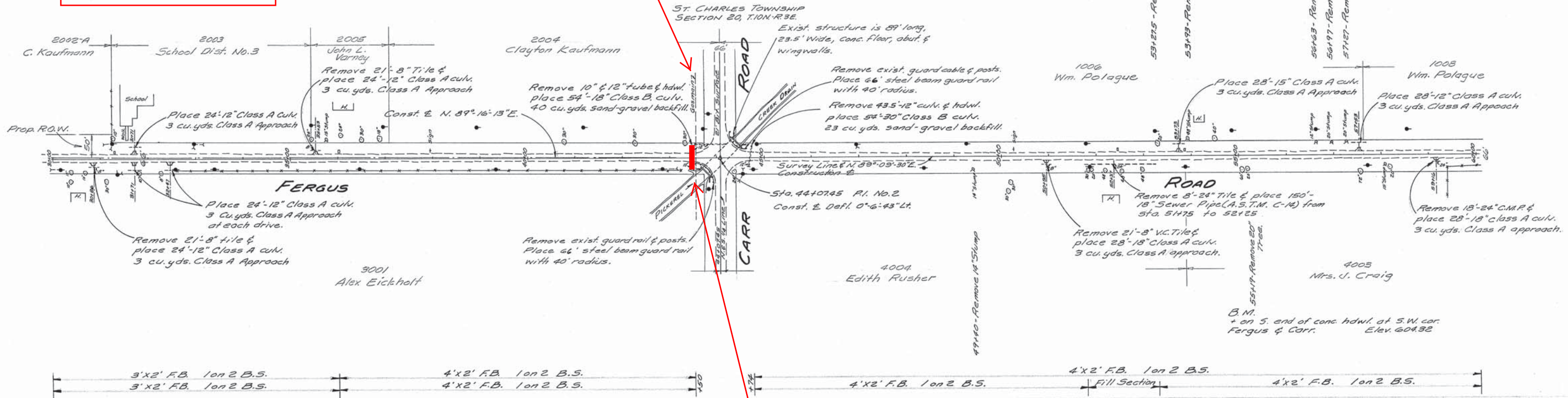


DATE	BY	STATE	PROJECT NO.	SCALE	SHEET NO.	TOTAL SHEETS
4	MMH					
DATE	BY	STATE	PROJECT NO.	SCALE	SHEET NO.	TOTAL SHEETS
4	MMH		5146(3)	1/8" = 1'	4	9
ROUTE	COUNTY	TWP				
114	C573-86	SABINAW	3 CHARLES		4	9

Estimated Quantities  
(OPEN CUT OPTION)  
1 LS Traffic Control  
54'-18" RCP C76 IV  
65 Cyd Granular CL II Material  
25 Ton 22A-Limestone  
12 Ton HMA LVSP

CAUTION  
6" HP Gas Main



Remove 54'-18" CMP and Replace with  
54'-18" RCP C76 IV Tr Detail B  
(100% Granular CL II Backfill - with 8" 22A  
Limestone Agg Base & 4" HMA LVSP)

Notes:  
Need work done by May 26, 2017.  
Existing 18" CMP has 4'-5" cover.  
Compact sand to 95% Max Density.  
Compact agg base to 98% Max Density.

