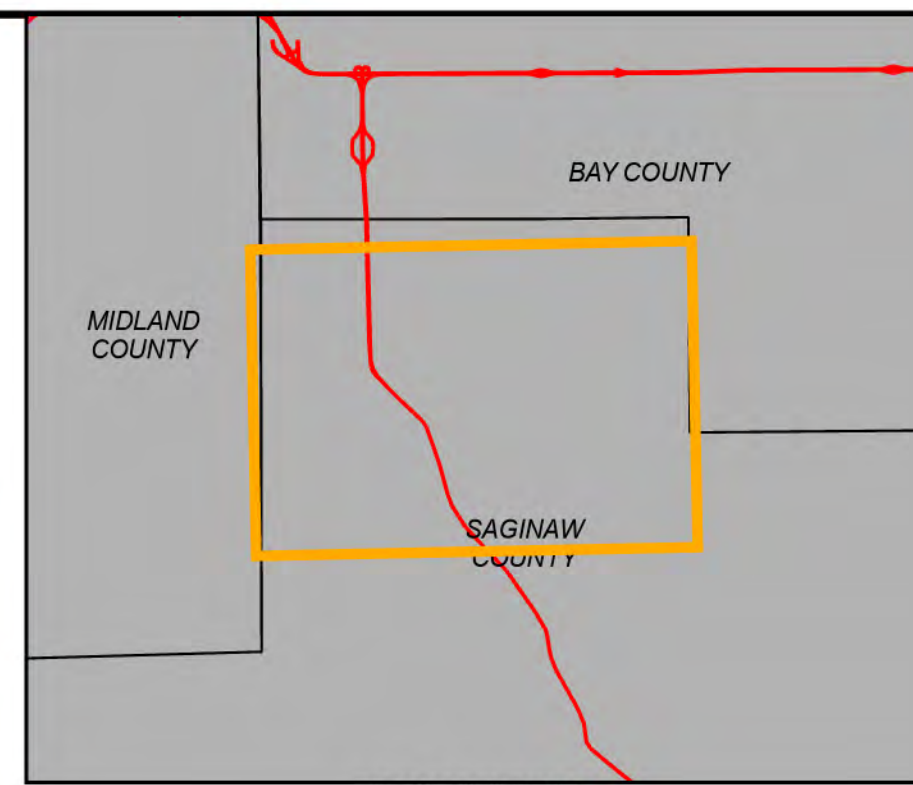


SCRC CATCH BASIN MAP

SAGINAW COUNTY, MICHIGAN

SAGINAW COUNTY ROAD COMMISSION



AREA MAP
NOT TO SCALE

N



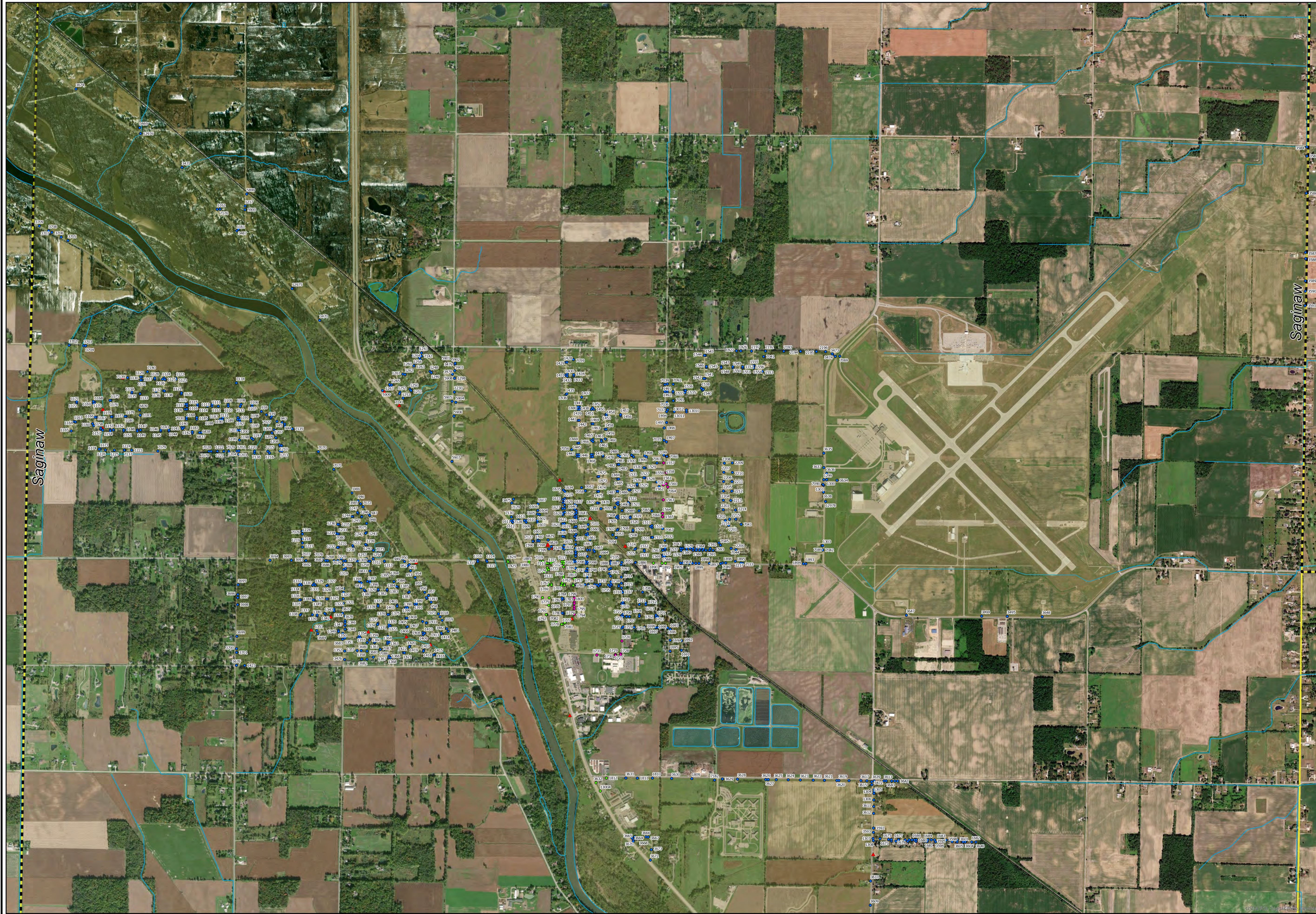
0 500 1,000 2,000
FEET

LEGEND

- URBAN AREAS (CENSUS 2010)
- RAILROAD
- WATERCOURSES
- MUNICIPALITY BOUNDARY
- OUTFALL

SCRC CATCH BASINS
PRIORITY

- HIGH
- MEDIUM
- LOW



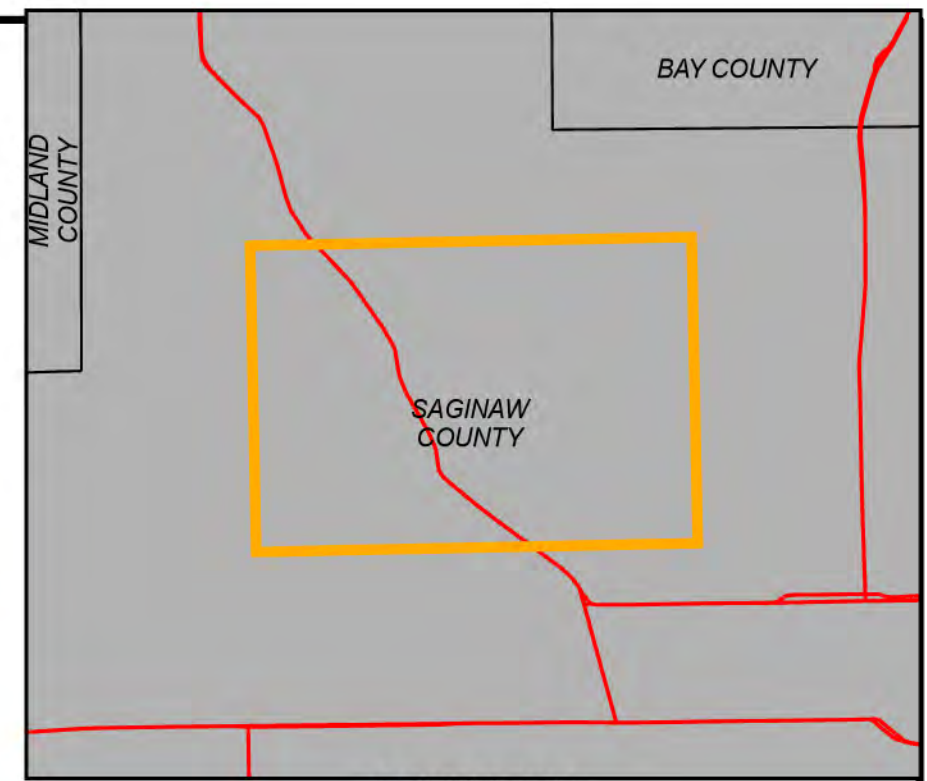
BY	MARK	REVISIONS	DATE
CATCH BASIN MAP			
CATCH BASIN MAP			
DE. BY: EAM		CH. BY: KRS	PROJECT NO.
DR. BY: EAM		APP. BY: RBH	126677SG2019
STDS.	SHEET 1 OF 9	DR	
DATE: OCTOBER 2019	FILE NO.	1	
SCALE: 1"=1,100'			

PATH: G:\PROJECTS\1146681\1146681\SASWA_OUTFALLS\MAPS_PRINTED_ON_10/20/2019 BY: ERICA MARTEL

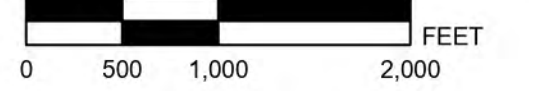
SCRC CATCH BASIN MAP

SAGINAW COUNTY, MICHIGAN

SAGINAW COUNTY ROAD COMMISSION

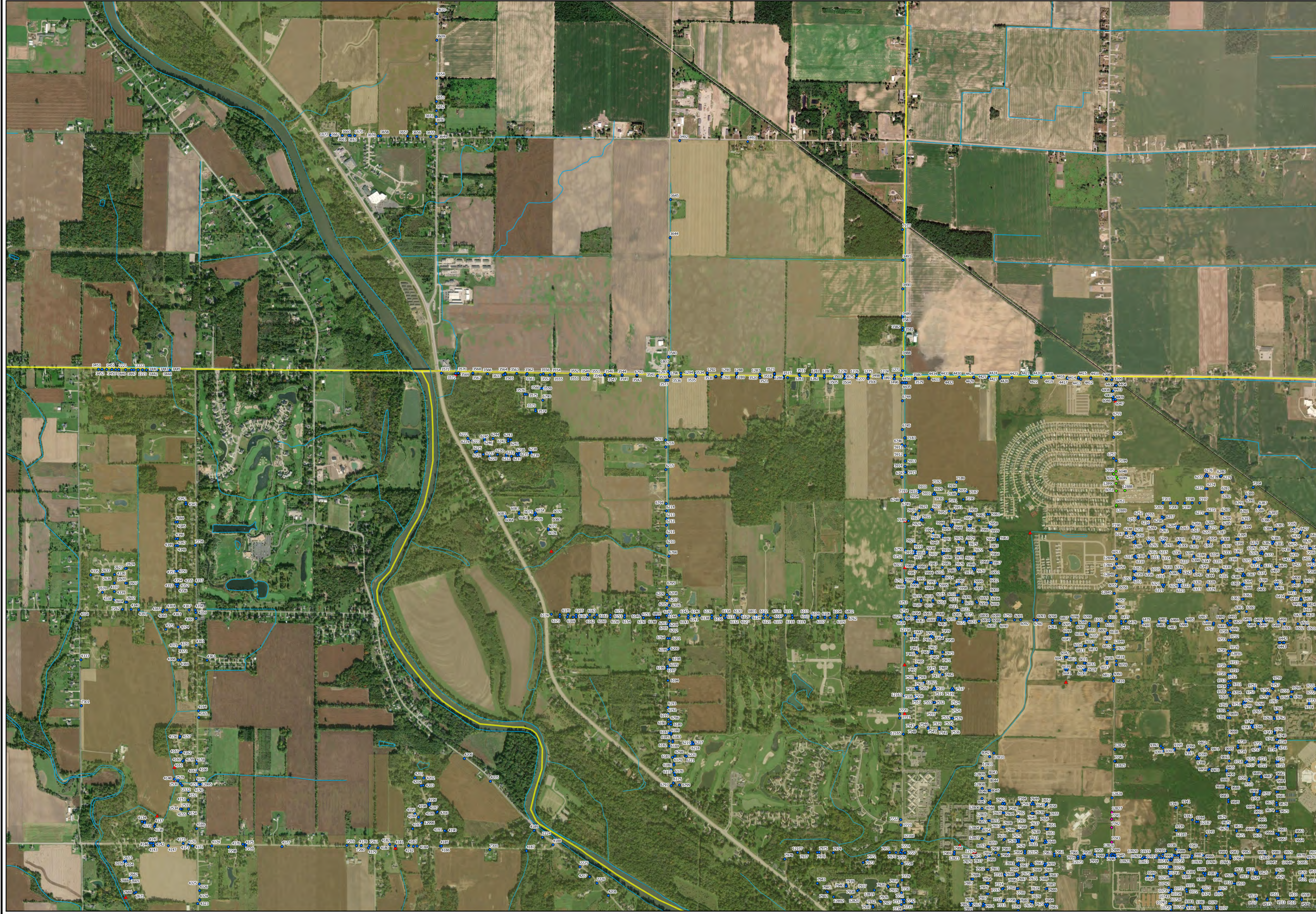


AREA MAP
NOT TO SCALE



LEGEND

- URBAN AREAS (CENSUS 2010)
- RAILROAD
- WATERCOURSES
- MUNICIPALITY BOUNDARY
- OUTFALL



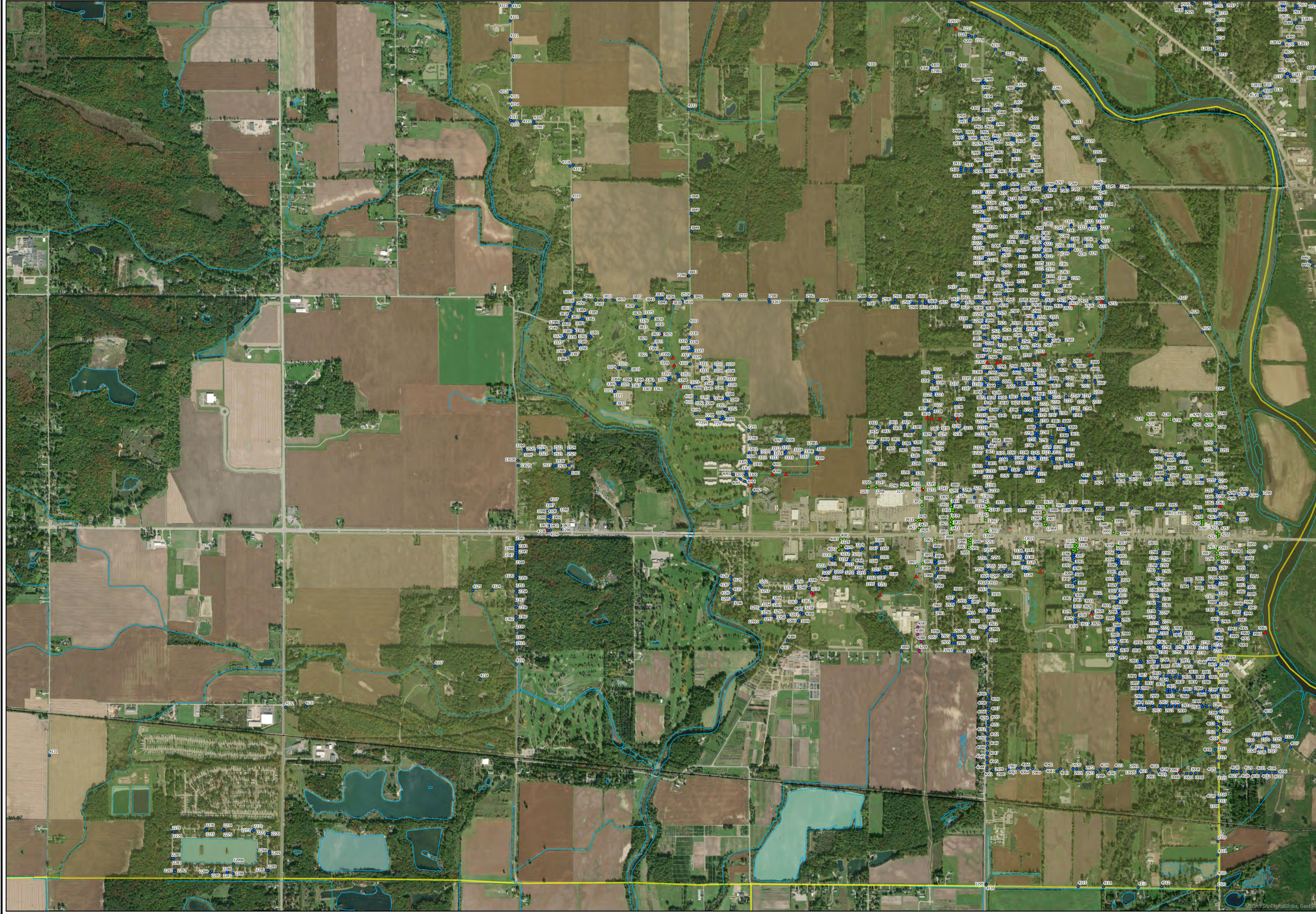
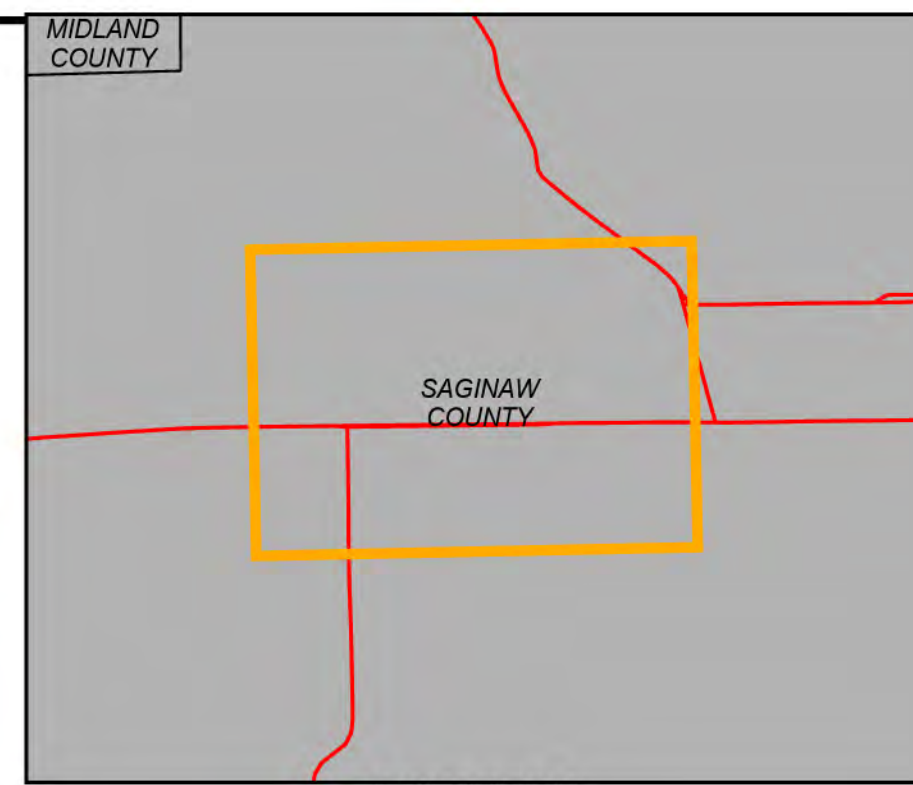
BY	MARK	REVISIONS	DATE
<p>SCRC CATCH BASIN MAP SAGINAW COUNTY, MICHIGAN</p> <p>CATCH BASIN MAP</p>			
DE. BY: EAM DR. BY: EAM		CH. BY: KRS APP. BY: RBH	
STDS.		PROJECT NO. 126677SG2019	
DATE: OCTOBER 2019 SCALE: 1"=1,000'		SHEET 2 OF 9 FILE NO.	
		DR 1	

PATH: G:\PROJECTS\126677\126677_SASWA\CATCH_BASIN_MAP_PRINTED_ON_HORIZONAL_BY_ERICA_MARTEL

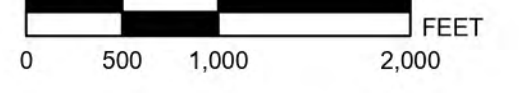
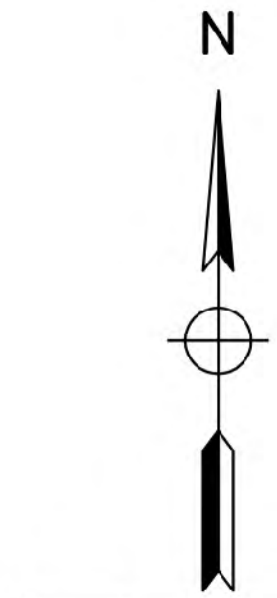
SCRC CATCH BASIN MAP

SAGINAW COUNTY, MICHIGAN

SAGINAW COUNTY ROAD COMMISSION



AREA MAP
NOT TO SCALE



LEGEND

- URBAN AREAS (CENSUS 2010)
 - RAILROAD
 - WATERCOURSES
 - MUNICIPALITY BOUNDARY
 - OUTFALL
- SCRC CATCH BASINS**
- PRIORITY**
- HIGH
 - MEDIUM
 - LOW

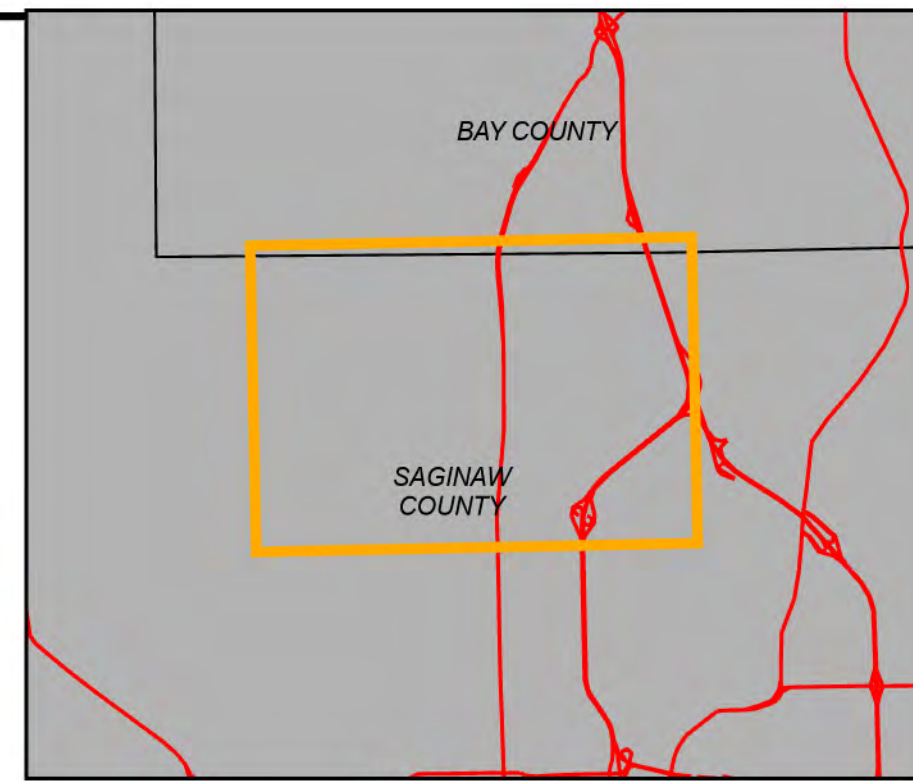
BY	MARK	REVISIONS	DATE
<p>SCRC CATCH BASIN MAP SAGINAW COUNTY, MICHIGAN</p>			
<p>CATCH BASIN MAP</p>			
		<p>SAGINAW'S OFFICE 230 S. Washington Ave Saginaw, MI 48607 Tel. 989-754-4747 www.SpicerGroup.com</p>	
DE BY: EAM	CH BY: KRS	PROJECT NO.	
DR BY: EAM	APP BY: RBH	126677SG2019	
STDS.	SHEET 3 OF 9	DR	
DATE: OCTOBER 2019	FILE NO.	3	
SCALE: 1"=1,000'			

PATH: G:\PROJECTS\126677\126677_SASWA\CATCHBASIN_MAP_OUTFALLS.dwg, PRINTED ON: 10/20/19 BY: ERICA MARTEL

SCRC CATCH BASIN MAP

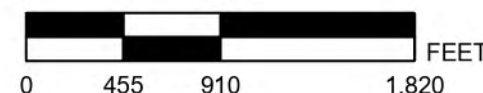
SAGINAW COUNTY, MICHIGAN

SAGINAW COUNTY ROAD COMMISSION



AREA MAP
NOT TO SCALE

N



LEGEND

- URBAN AREAS (CENSUS 2010)
- RAILROAD
- WATERCOURSES
- MUNICIPALITY BOUNDARY
- OUTFALL

SCRC CATCH BASINS

PRIORITY

- HIGH
- MEDIUM
- LOW



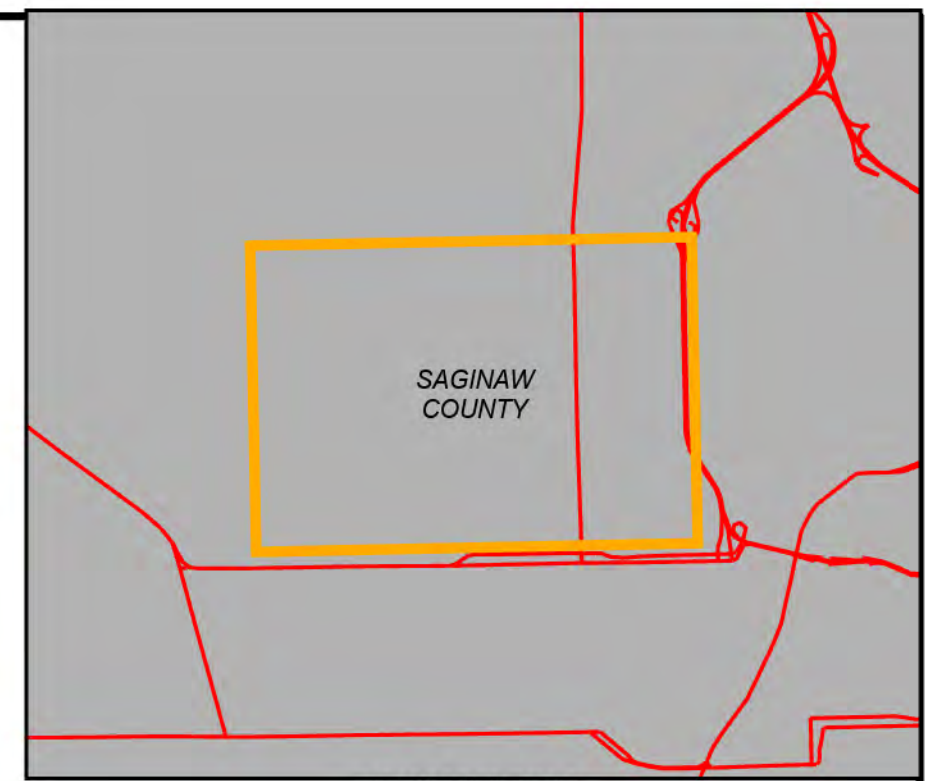
BY	MARK	REVISIONS	DATE
<p>THE WORK REPRESENTED BY THIS DRAWING WAS DESIGNED BY THE ENGINEER FOR THIS SPECIFIC APPLICATION AND SPECIFIC LOCATION (AS DESCRIBED HEREIN) IN ACCORDANCE WITH THE CONDITIONS PREVALENT AT THE TIME THE DESIGN WAS DONE. THE ENGINEER DOES NOT GUARANTEE AND WILL NOT BE LIABLE FOR ANY OTHER LOCATION, CONDITION, DESIGN OR PURPOSE.</p>			
<p>SCRC CATCH BASIN MAP SAGINAW COUNTY, MICHIGAN</p>			
<p>CATCH BASIN MAP</p>			
		<p>SAGINAW'S OFFICE 230 S Washington Ave Saginaw, MI 48607 Tel. 989-754-4747 www.SpicerGroup.com</p>	
DE BY: EAM	CH BY: KRS	PROJECT NO.	
DR BY: EAM	APP BY: RBH	126677SG2019	
STDS.	SHEET 4 OF 9	DR	
DATE: OCTOBER 2019	FILE NO.	4	
SCALE: 1"=900'			

PATH: G:\PROJECTS\1166677\1166677_SASWA_CATCHBASIN_OUTFALLS.DWG, PRINTED ON: 10/20/19 BY: ERICA MARTEL

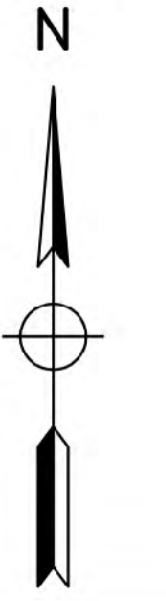
SCRC CATCH BASIN MAP

SAGINAW COUNTY, MICHIGAN

SAGINAW COUNTY ROAD COMMISSION

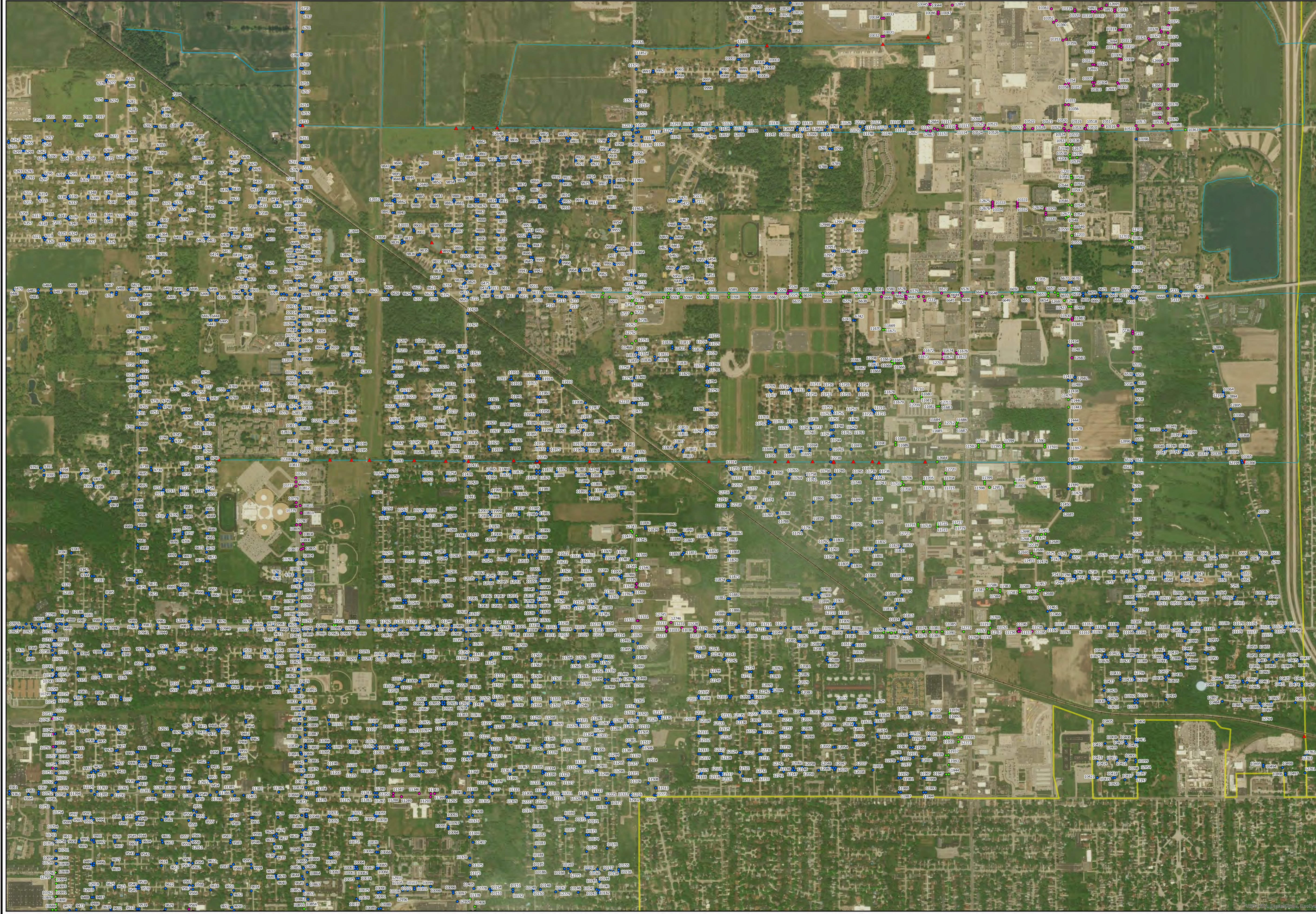


AREA MAP
NOT TO SCALE



LEGEND

- URBAN AREAS (CENSUS 2010)
 - RAILROAD
 - WATERCOURSES
 - MUNICIPALITY BOUNDARY
 - OUTFALL
- SCRC CATCH BASINS**
- PRIORITY**
- HIGH
 - MEDIUM
 - LOW



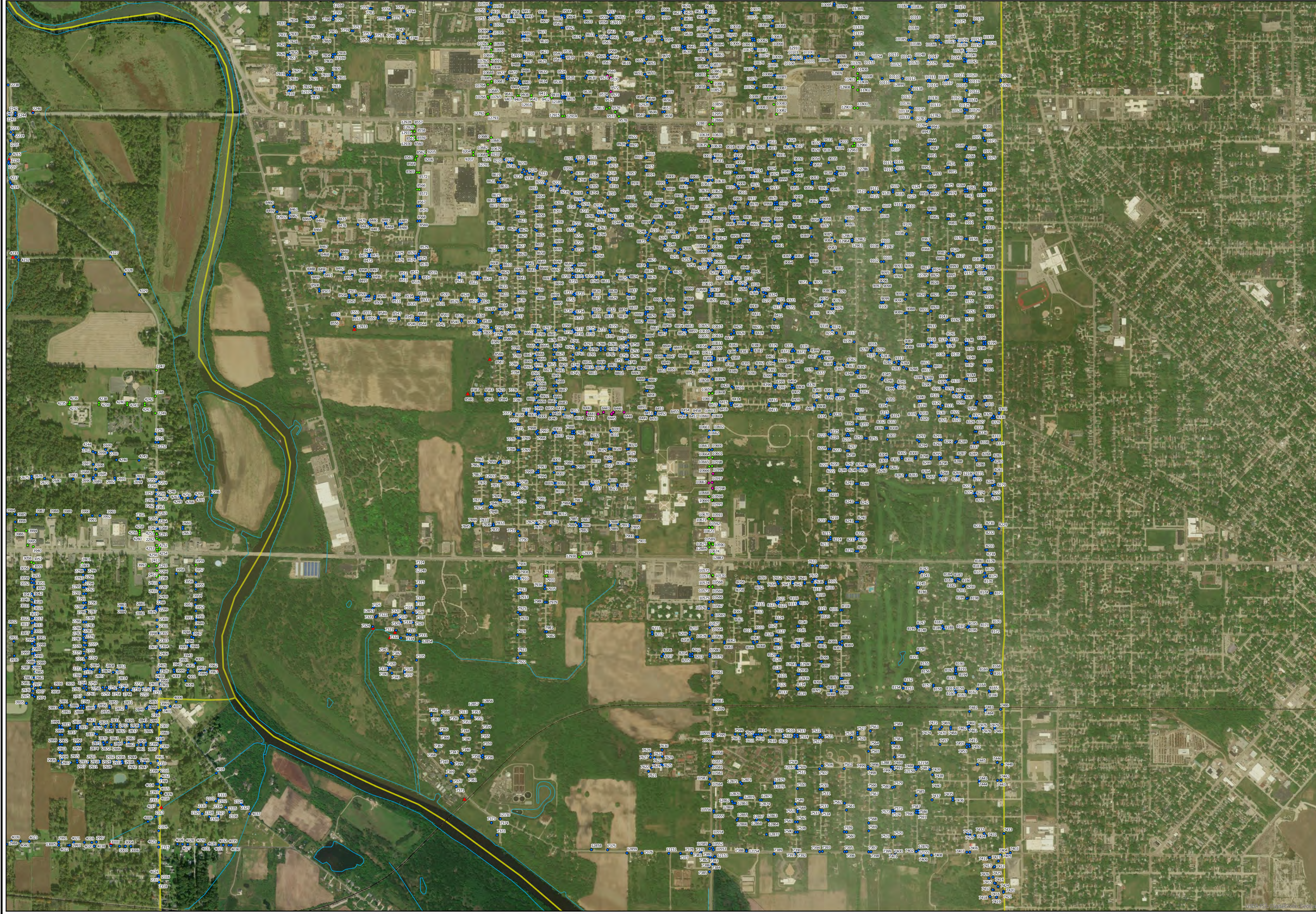
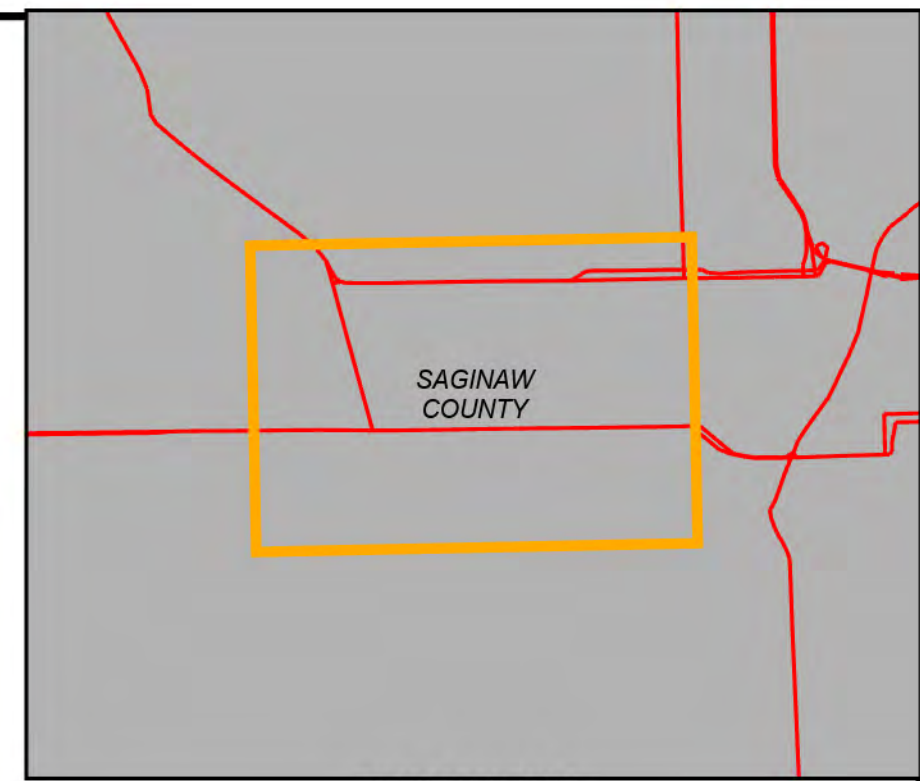
PATH: G:\PROJECTS\16017\16017_SASWA\SCRC_CATCH_BASIN_MAP.dwg, PRINTED ON: 10/20/19, BY: ERICA MARTEL

BY	MARK	REVISIONS	DATE
<p>THE WORK REPRESENTED BY THIS DRAWING WAS DESIGNED BY THE ENGINEER FOR THIS SPECIFIC APPLICATION AND SPECIFIC LOCATION (AS DESCRIBED HEREIN) IN ACCORDANCE WITH THE CONDITIONS PREVALENT AT THE TIME THE DESIGN WAS DONE. THE ENGINEER DOES NOT GUARANTEE AND WILL NOT BE LIABLE FOR ANY OTHER LOCATION, CONDITION, DESIGN OR PURPOSE.</p>			
<p>SCRC CATCH BASIN MAP SAGINAW COUNTY, MICHIGAN</p>			
<p>CATCH BASIN MAP</p>			
		<p>SAGINAW'S OFFICE 230 S. Washington Ave. Saginaw, MI 48607 Tel. 989-754-4747 www.SpicerGroup.com</p>	
DE BY: EAM	CH BY: KRS	PROJECT NO.	
DR BY: EAM	APP BY: RBH	126677SG2019	
STDS.	SHEET 5 OF 9	DR	
DATE: OCTOBER 2019	FILE NO.	5	
SCALE: 1"=700'			

SCRC CATCH BASIN MAP

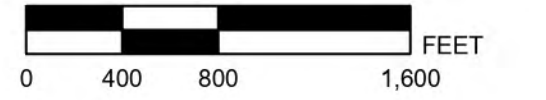
SAGINAW COUNTY, MICHIGAN

SAGINAW COUNTY ROAD COMMISSION



AREA MAP
NOT TO SCALE

N



LEGEND

URBAN AREAS (CENSUS 2010)

RAILROAD

WATERCOURSES

MUNICIPALITY BOUNDARY

OUTFALL

SCRC CATCH BASINS

PRIORITY

HIGH

MEDIUM

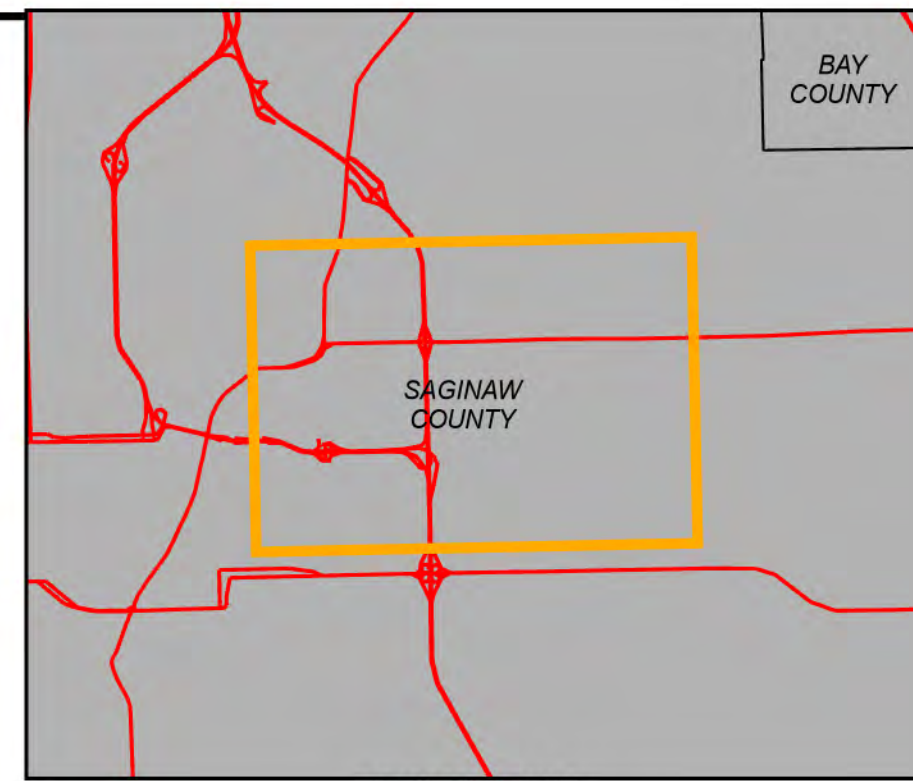
LOW

BY	MARK	REVISIONS	DATE
<p>THE WORK REPRESENTED BY THIS DRAWING WAS DESIGNED BY THE ENGINEER FOR THIS SPECIFIC APPLICATION AND SPECIFIC LOCATION (AS DESCRIBED HEREIN) IN ACCORDANCE WITH THE CONDITIONS PREVALENT AT THE TIME THE DESIGN WAS DONE. THE ENGINEER DOES NOT GUARANTEE AND WILL NOT BE LIABLE FOR ANY OTHER LOCATION, CONDITION, DESIGN OR PURPOSE.</p>			
<p>SCRC CATCH BASIN MAP SAGINAW COUNTY, MICHIGAN</p>			
<p>CATCH BASIN MAP</p>			
		<p>SAGINAW'S OFFICE 230 S Washington Ave Saginaw, MI 48607 Tel. 989-754-4747 www.SpicerGroup.com</p>	
DE BY: EAM	CH BY: KRS	PROJECT NO.	
DR BY: EAM	APP BY: RBH	126677SG2019	
STDS.	SHEET 6 OF 9	DR	
DATE: OCTOBER 2019	FILE NO.	6	
SCALE: 1"=800'			

SCRC CATCH BASIN MAP

SAGINAW COUNTY, MICHIGAN

SAGINAW COUNTY ROAD COMMISSION



AREA MAP
NOT TO SCALE

N



0 430 860 1,720 FEET

LEGEND

URBAN AREAS (CENSUS 2010)

RAILROAD

WATERCOURSES

MUNICIPALITY BOUNDARY

OUTFALL

SCRC CATCH BASINS

PRIORITY

• HIGH

• MEDIUM

• LOW

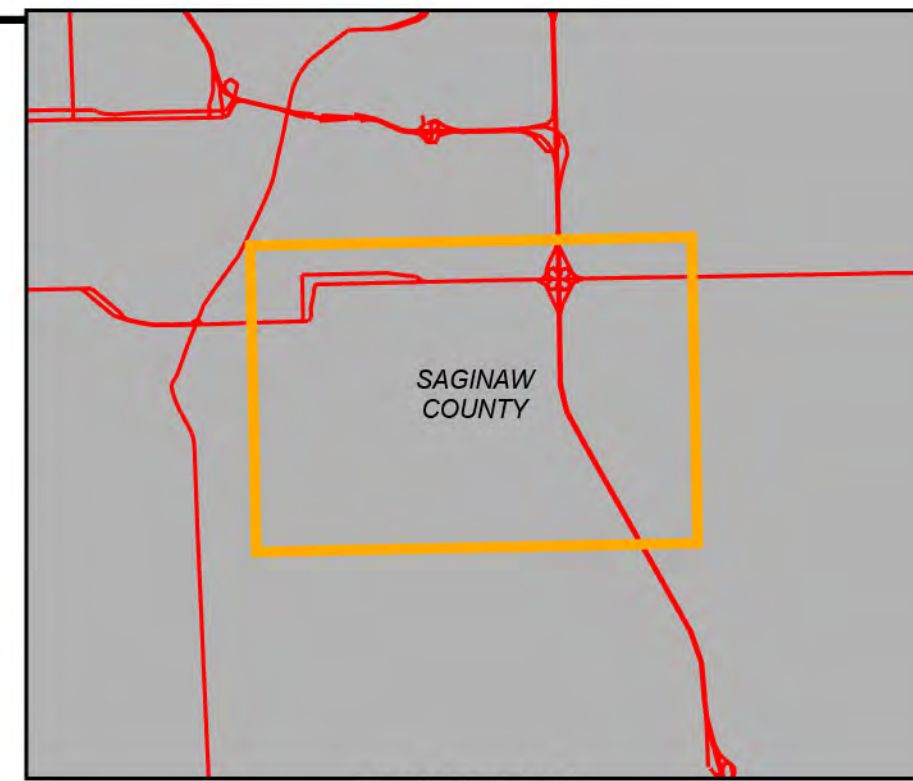


BY	MARK	REVISIONS	DATE
<p>THE WORK REPRESENTED BY THIS DRAWING WAS DESIGNED BY THE ENGINEER FOR THIS SPECIFIC APPLICATION AND SPECIFIC LOCATION (DESCRIBED HEREIN) IN ACCORDANCE WITH THE CONDITIONS PREVALENT AT THE TIME THE DESIGN WAS DONE. THE ENGINEER DOES NOT GUARANTEE AND WILL NOT BE LIABLE FOR ANY OTHER LOCATION, CONDITION, DESIGN OR PURPOSE.</p>			
<p>SCRC CATCH BASIN MAP SAGINAW COUNTY, MICHIGAN</p>			
<p>CATCH BASIN MAP</p>			
		<p>SAGINAW'S OFFICE 230 S Washington Ave Saginaw, MI 48607 Tel. 989-754-4747 www.SpicerGroup.com</p>	
DE BY: EAM	CH BY: KRS	PROJECT NO.	
DR BY: EAM	APP BY: RBH	126677SG2019	
STDS.	SHEET 7 OF 9	DR	
DATE: OCTOBER 2019	FILE NO.	7	
SCALE: 1"=850'			

SCRC CATCH BASIN MAP

SAGINAW COUNTY, MICHIGAN

SAGINAW COUNTY ROAD COMMISSION



AREA MAP
NOT TO SCALE

N



0 350 700 1,400 FEET

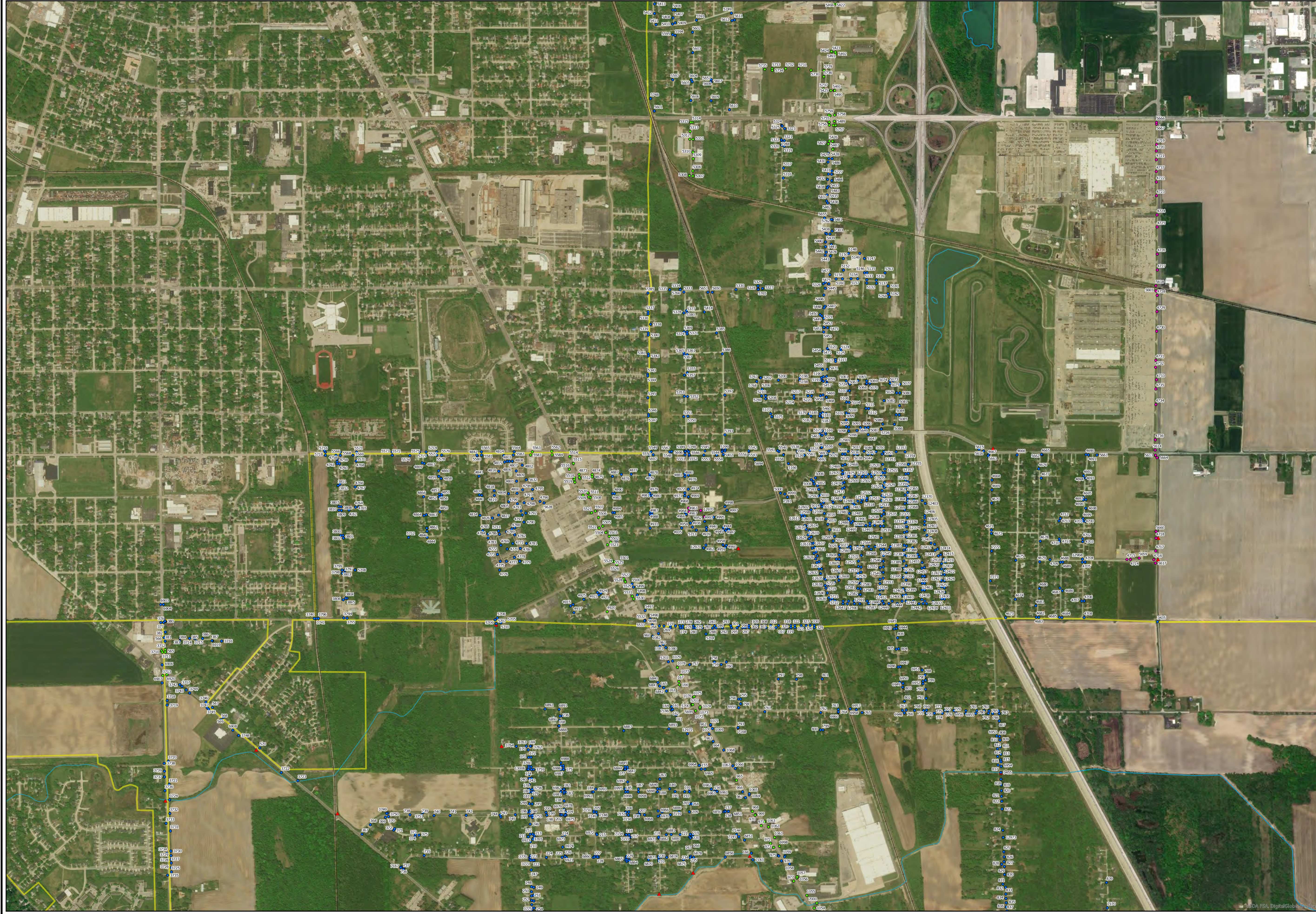
LEGEND

- URBAN AREAS (CENSUS 2010)
- RAILROAD
- WATERCOURSES
- MUNICIPALITY BOUNDARY
- OUTFALL

SCRC CATCH BASINS

PRIORITY

- HIGH
- MEDIUM
- LOW



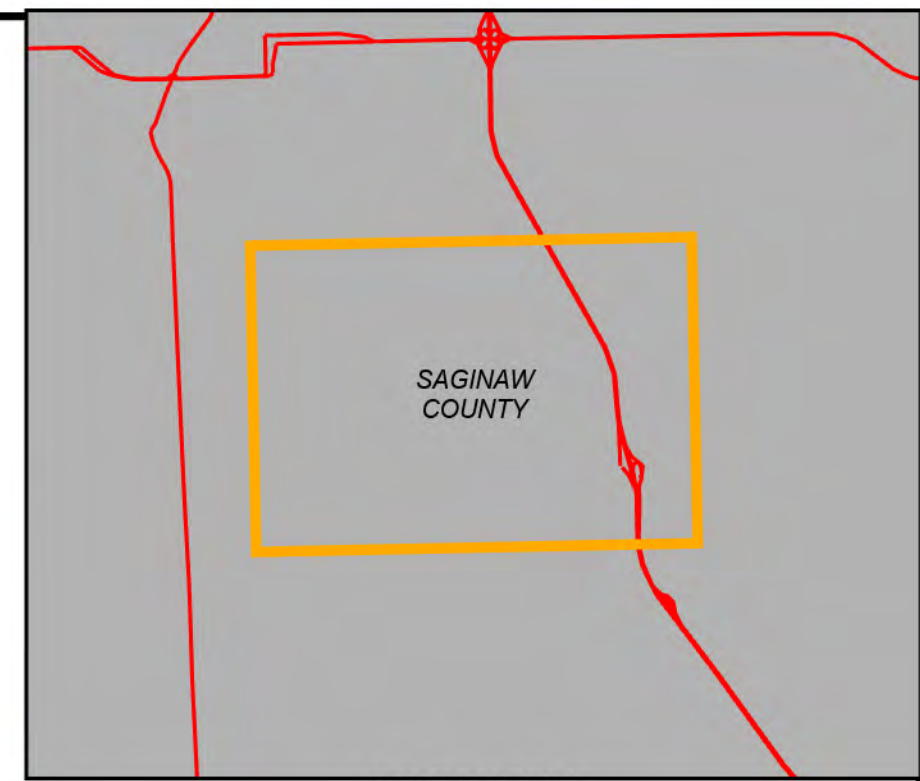
BY	MARK	REVISIONS	DATE
<p>SCRC CATCH BASIN MAP SAGINAW COUNTY, MICHIGAN</p>			
<p>CATCH BASIN MAP</p>			
		<p>SAGINAW'S OFFICE 230 S Washington Ave Saginaw, MI 48607 Tel. 989-754-4747 www.SpicerGroup.com</p>	
DE BY: EAM	CH BY: KRS	PROJECT NO.	
DR BY: EAM	APP BY: RBH	126677SG2019	
STDS.	SHEET 8 OF 9	DR	
DATE: OCTOBER 2019	FILE NO.	8	
SCALE: 1"=700'			

PATH: G:\PROJECTS\126677\126677_SASWA\SCRC_CATCH_BASIN_MAP_OUTFALLS.dwg, PRINTED ON: 10/20/2019 BY: ERICA MARTEL

SCRC CATCH BASIN MAP

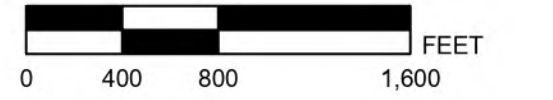
SAGINAW COUNTY, MICHIGAN

SAGINAW COUNTY ROAD COMMISSION



AREA MAP
NOT TO SCALE

N



LEGEND

- URBAN AREAS (CENSUS 2010)
- RAILROAD
- WATERCOURSES
- MUNICIPALITY BOUNDARY
- OUTFALL

SCRC CATCH BASINS
PRIORITY

- HIGH
- MEDIUM
- LOW

BY	MARK	REVISIONS	DATE

THE WORK REPRESENTED BY THIS DRAWING WAS DESIGNED BY THE ENGINEER FOR THIS SPECIFIC APPLICATION AND SPECIFIC LOCATION DESCRIBED HEREIN IN ACCORDANCE WITH THE CONDITIONS PREVALENT AT THE TIME THE DESIGN WAS DONE. THE ENGINEER DOES NOT GUARANTEE AND WILL NOT BE LIABLE FOR ANY OTHER LOCATION, CONDITION, DESIGN OR PURPOSE.

SCRC CATCH BASIN MAP
SAGINAW COUNTY, MICHIGAN

CATCH BASIN MAP



SAGINAW'S OFFICE
230 S Washington Ave
Saginaw, MI 48607
Tel. 989-754-4747
www.SpicerGroup.com

DE. BY: EAM	CH. BY: KRS	PROJECT NO.
DR. BY: EAM	APP. BY: RBH	126677SG2019
STDS.	SHEET 9 OF 9	DR
DATE: OCTOBER 2019	FILE NO.	9
SCALE: 1"=800'		